



**KIBBLE**  
EQUIPMENT

**READY TO  
HARVEST  
GUIDE**

**50/60 Series**

*Combine Cab  
and Controls*



**JOHN DEERE**

# 50 & 60 Series HYDRO HANDLE

## Active Header Control Activation Switches

Header height resume, reel resume, and corn head deck plate resume



**Quick Stop Button**

**5 Position  
Unloading  
Auger Swing  
Switch**

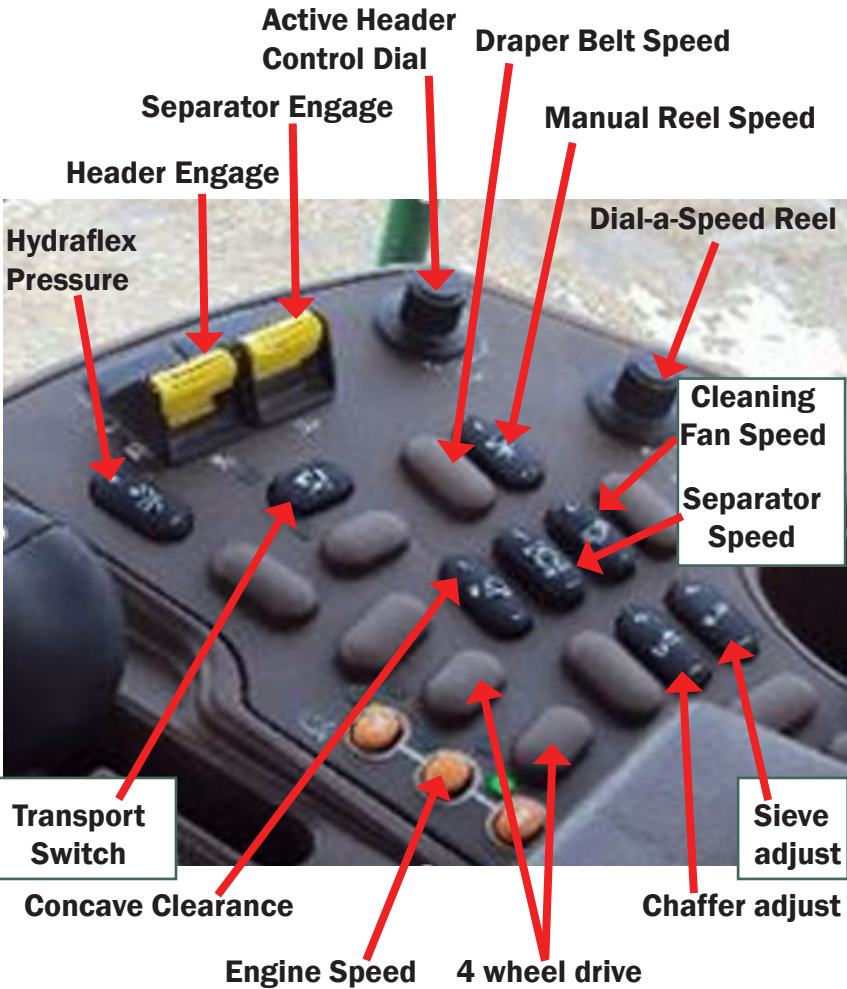
**Unloading  
Auger**

- Engage
- Disengage

- Header  
Raise and  
Lower
- Contour  
Master

- Reel Height
- Reel Fore and Aft Position
- Feeder-house Speed
- Corn Head Deck Plate  
Positioning

# 50 & 60 Series ARMREST



# 50 & 60 Series ACTIVE HEADER CONTROLS

**A** - Active Header Control Display - Enable Buttons

**B** - Header Height Sensing Enable Button - for Hydraflex Operation (600F and 600FD) or header height sensing (900F) platforms, for height sensing on 90 and 600 series corn-heads

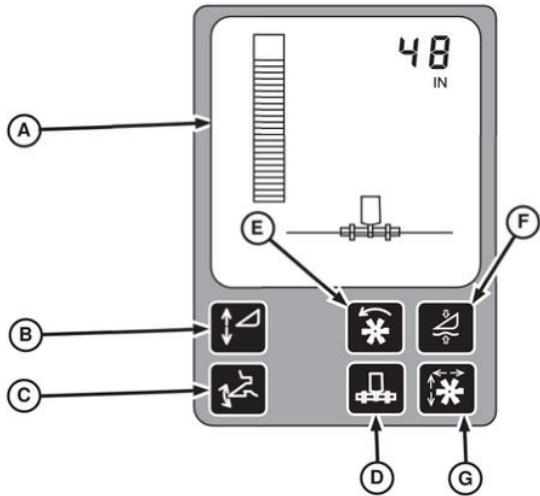
**C** - Header Height Resume Enable Button - must be enabled for use of the 1-2-3 buttons on hydro handle

**D** - CONTOUR MASTER Enable Button

**E** - Reel DIAL-A-SPEED Button - this will allow the reel speed to match ground speed based on what ratio is set w/ the dial on the armrest

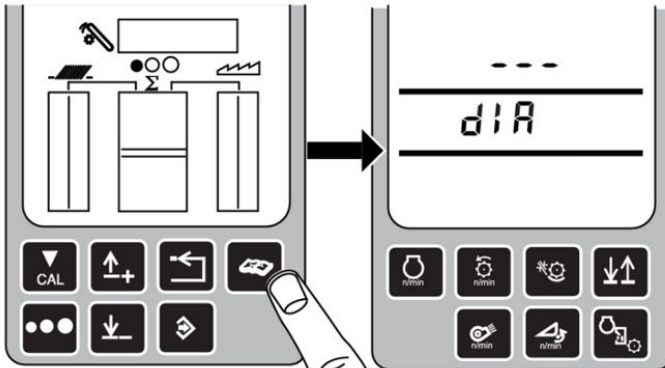
**F** - Active Header Float Enable Button - DO NOT USE - this option for Rigid (600R) headers

**G** - Reel Position Resume Enable Button - ties reel position (or deck plate spacing) to the 1-2-3 buttons

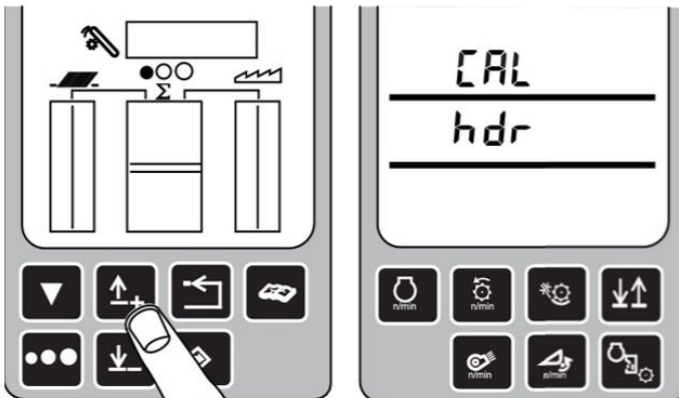


# HEADER CALIBRATIONS THRU THE CORNER-POST

Press DIAGNOSTIC button under Vision Trak monitor



Press the up or down arrow button until CAL and hdr appear on display. Press Enter to Enter calibration.

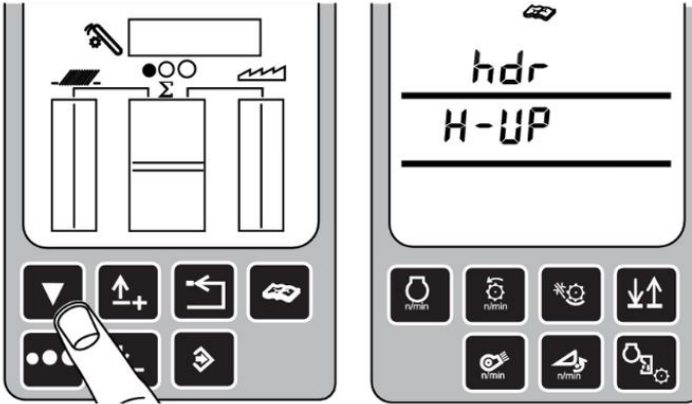


**In order to calibrate we have to take all the hydra flex pressure out of the system.**

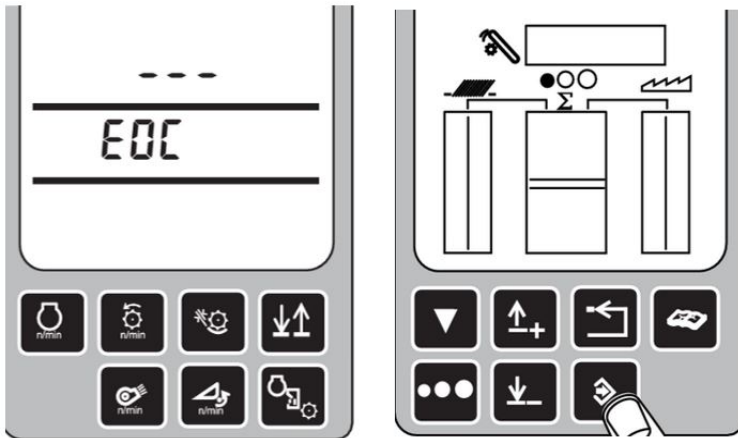
If P-dn is displayed, decrease HYDRAFLEX pressure with the HYDRAFLEX button until pressure is below 1000 psi. HYDRAFLEX pressure will be displayed as the pressure is lowered. H-dn will appear when pressure is below 1000 psi (6900 kPa) (69 bar). Lower the header to the ground.

# HEADER CALIBRATIONS THRU THE CORNERPOST

After each command Press CAL button.



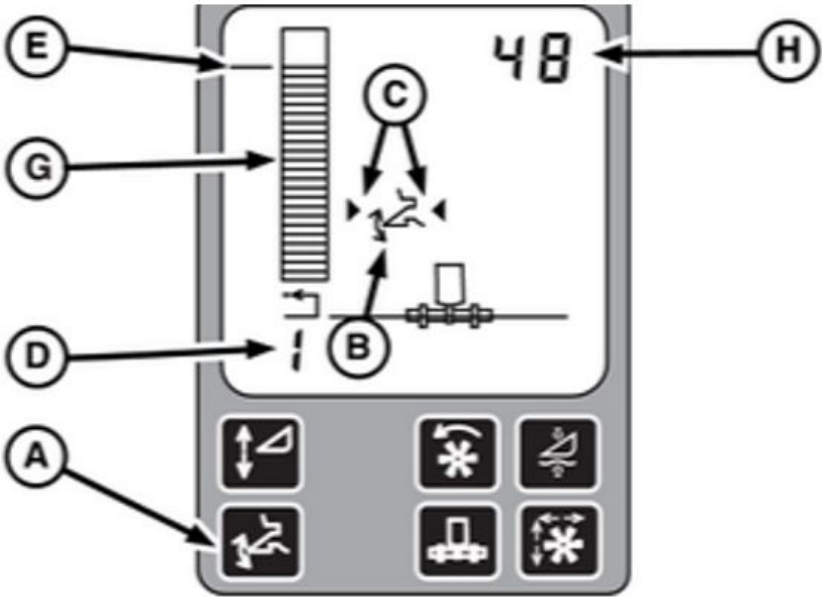
When EOC (end of calibration) is displayed- press enter to save calibration.



***If you get an Error messages reference the end of Section 40 in the OM.***

More than likely, the sensors need adjustment to get them within acceptable voltage ranges.

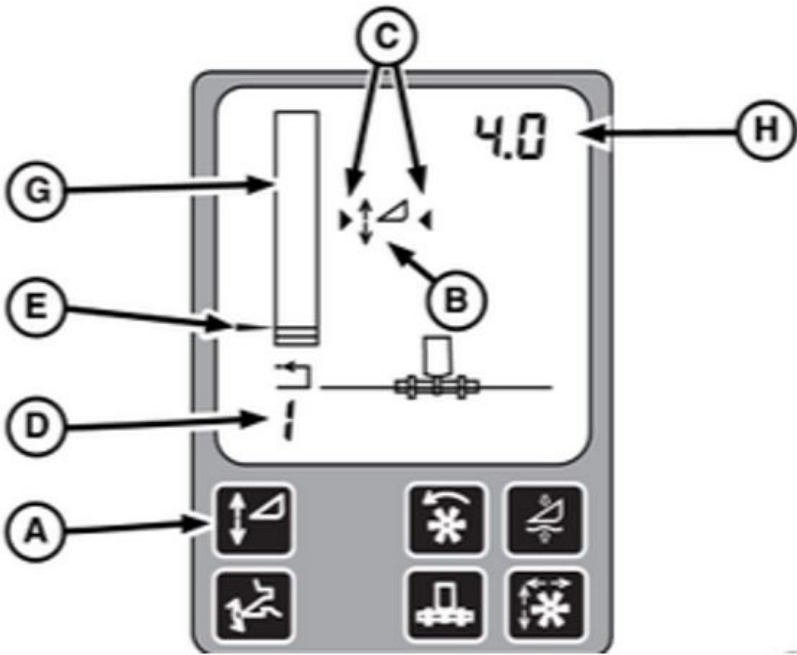
# SETTING HEADER RESUME: 1-2-3 BUTTONS



Header Resume must first be enabled by pressing the Header Height Resume button (A). When the symbol (B) is displayed w/ the arrow (C) indicators, this confirms it is active. Press the #3 button on the hydro handle- you will notice the number (D) in the corner of the AHC panel on the Cornerpost.

Use the AHC dial on the armrest to set the desired cutting height setpoint (E). Where you leave the height at is where it will resume too. Press the #2 button- Set #2 as an alternate cutting height. Press #1 and use the AHC dial to set #1 as your raise height for turning on the ends.

## SETTING HEADER HEIGHT SENSING OR HYDRA FLEX PRESSURE



Height Sensing is Enabled by pressing the Height Sensing button (A). When the symbol (B) is displayed w/ the arrow (C) indicators, this confirms it is active.

If Header Height Sensing and Header Height Resume enabled:

- Button 1 activates Header Height Resume
  - Button 2 and 3 activates Header Height Sensing
- Number (D) in the lower left corner of the display indicates which activation button was selected.



## SETTING HEADER HEIGHT SENSING OR HYDRA FLEX PRESSURE

To change the HYDRAFLEX pressure setpoint (E) press #3 and use the AHC dial to adjust the pressure. Bar graph (G) and number (H) show the relative position and HYDRAFLEX pressure. Set #3 with a lower pressure (more rigid) for dry conditions. Set #2 at higher pressure (more float) for wet conditions.

Manually raising the header will deactivate the system. Pressing any of the three activation buttons will reactivate the system.

### **Recommended Hydrflex Pressure Settings:**

As you increase pressure- the more float the header will have.

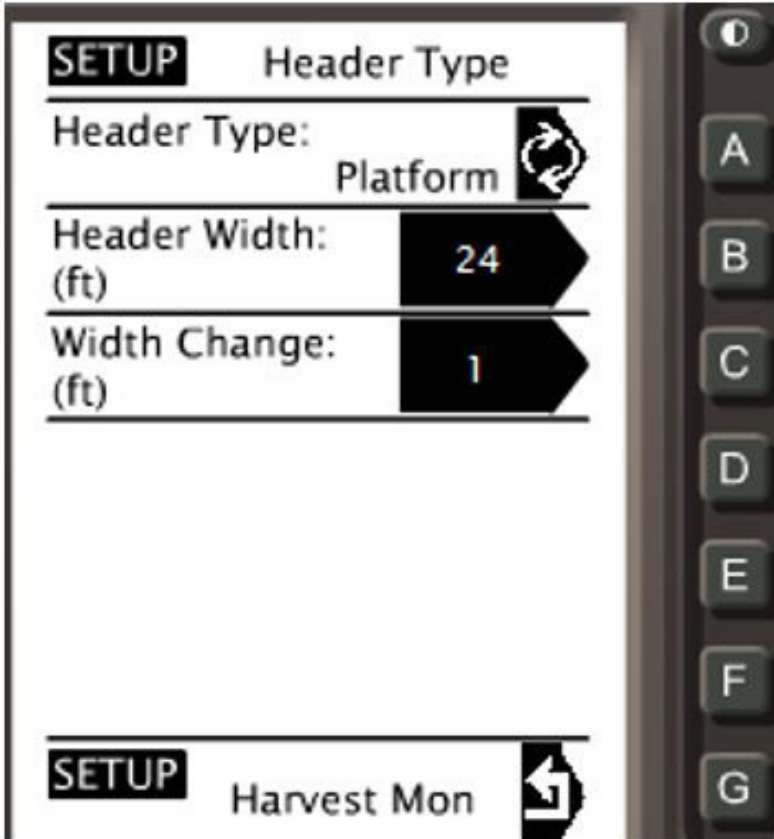
- 1,000 psi for firm ground conditions.
- 1,300 psi for normal ground conditions.
- 1,700 psi for soft ground conditions.

## 50 & 60 Series SETTING RECORDING HEIGHT



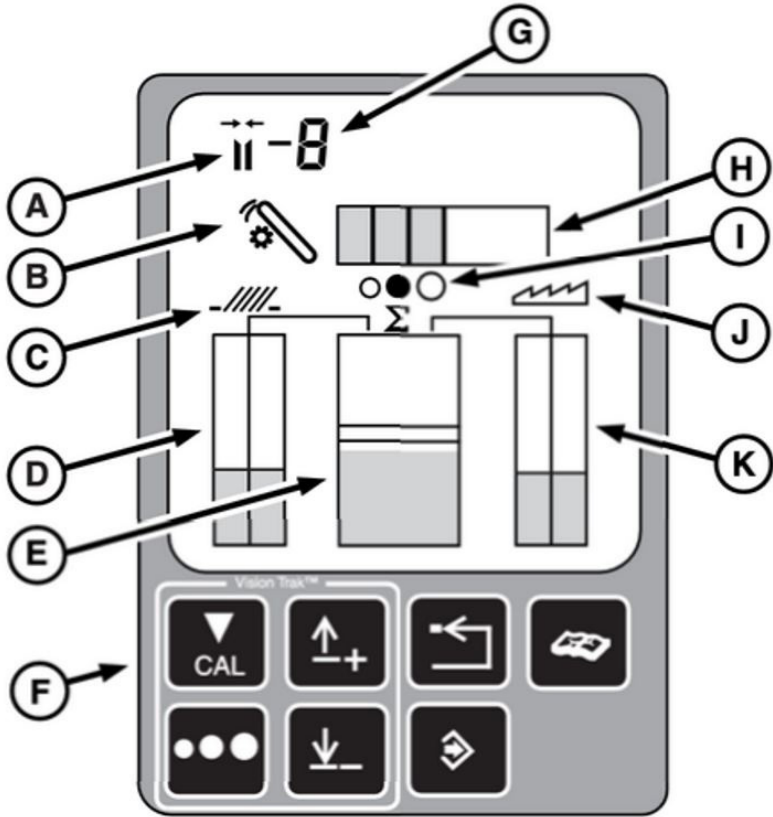
**Set Recording Height** - manually raise/lower header to a position greater than #2 resume and less than #1 raise height for turning on ends. Go to Original Greenstar Display GSD and press Setup/ Harvest Monitor. Find the RECORD STOP HEIGHT and press the <SAVE> button to set the current position as the recording on/off position. Once set, you will hear an audible tone every time you raise/lower head to indicate the header is recording.

## 50 & 60 Series SETTING UP HEADER TYPE



**Setting up Header in the Harvest Monitor (OGSD)** – Go to Original Greenstar Display GSD and press Setup/ Harvest Monitor then Header Type. Select which header type is being used, the button to toggle between predefined header options. Also enter appropriate header width and width change measurements. Implement type/width will carry over to the 2600/2630 if you are using one.

# 50 & 60 Series VISION TRAK DISPLAY



- A** - Adjustable Deck Plate Icon (optional)
- B** - Tailings Icon
- C** - Shoe Icon
- D** - Shoe Loss Display
- E** - Total Loss Display
- F** - Control Keys
- G** - Deck Plate Position (Optional)
- H** - Tailings Volume Display
- I** - Seed Size - Wheat
- J** - Separator Icon
- K** - Separator Loss Display

## 50 & 60 Series SEED SIZE CHART

We need to adjust seed size for different crops to accurately display losses in the Vision Trak monitor. Press the Seed Size button w/ the three dots (F) until the indicator (I) is lit up for the appropriate seed size for your crop. Reference Chart below. After performing a field check and confirming that your losses are acceptable, you can calibrate the loss sensors for the separator and shoe by pressing the CAL button under the Vision Trak display.

Small Seed	Medium Seed	Large Seed
Flax	Guar	Corn
Mustard	Sorghum	Soybeans
Oats	Wheat	Sunflowers

<b>50/60 Series Combine Settings (Outside the cab)</b>				
<b>Crops</b>	<b>Corn (dry)</b>	<b>Corn (wet)</b>	<b>Soybeans</b>	<b>Wheat</b>
rotor drive	1 (slow speed)	1 (slow speed)	2 (high speed)	2 (high speed)
recommended concave type	round bar	round bar	large wire/round bar	small wire
Feed Accel. Wear Strips	serrated or swept back	serrated or smooth	serrated or swept back	serrated
separator grate spacers	installed	installed	installed	out
Separator Covers	none	none	none	install 2 rows on RHS, 3 rows on LHS
Feederhouse drum height	up	up	down	down
Feederhouse chain speed	slow (22T sprocket)	slow (22T sprocket)	fast (26T sprocket)	fast (26T sprocket)
Feed Accel. Speed	slow	slow *slow down kit available	fast or slow for dry/ grain quality	fast or slow for dry/grain and straw quality
chopper speed	slow	slow	fast	fast
chopper knife bank	out	out	half-way	in all the way for finest cut
crop deflector	corn	corn	grain	grain
spreader speed	slow	slow	fast	fast

<b>50/60 Series Combine Settings (inside - from armrest)</b>				
<b>Crops</b>	<b>Corn (dry)</b>	<b>Corn (wet)</b>	<b>Soybeans</b>	<b>Wheat</b>
rotor drive	250-400	300-400	450-650	750-950
Concave Clearance	25-35 mm	25-35 mm	15-25 mm	5-20 mm
Fan Speed - 50 series	1250-1400	1250-1400	1150-1250	1050-1150
Fan Speed - 60 series	900-1150	900-1150	800-950	750-850
Chaffer Clearance	15-18 mm	15-18 mm	14-18 mm	16-18 mm
Sieve Clearance	10-13 mm	10-13 mm	6-9 mm	5-7 mm
Deep Tooth Chaffer	14-16 mm	14-16 mm	10-12 mm	n/a
Deep Tooth Sieve	8-10 mm	8-10 mm	4-6 mm	n/a

# NEED ASSISTANCE? CONTACT US!

<b>Belle Plaine, MN</b>	952-873-2224
<b>Bird Island, MN</b>	320-365-3445
<b>Blue Earth, MN</b>	507-526-2714
<b>Brookings, SD</b>	605-693-3514
<b>Garretson, SD</b>	605-594-3476
<b>Hollandale, MN</b>	507-889-4221
<b>Huron, SD</b>	605-352-8519
<b>Madison, SD</b>	605-256-4575
<b>Mankato, MN</b>	507-387-8201
<b>Marshall, MN</b>	507-537-1523
<b>Milbank, SD</b>	605-432-5523
<b>Minnesota Lake, MN</b>	507-462-3828
<b>Montevideo, MN</b>	320-269-6466
<b>Northwood, IA</b>	641-324-1154
<b>Osage, IA</b>	641-732-3719
<b>Owatonna, MN</b>	507-451-4054
<b>Redwood Falls, MN</b>	507-644-3571
<b>Sleepy Eye, MN</b>	507-794-5381
<b>Tyler, MN</b>	507-247-5572
<b>Wabasso, MN</b>	507-342-5171
<b>Watertown, SD</b>	605-886-3545
<b>Wheaton, MN</b>	320-563-8112